

DATE REVISED	DATE FILMED	DATE REVISED	DATE FILMED	FED. PROJ. DIST. NO.	SIA% ARK.	FED. AID PROJ. NO.	SHEET NO.	TOT. # SHEETS
				6	ARK.			
				JOB NO.		60452	61	118
				① 6357C		LAYOUT	31018	

GENERAL NOTES

BENCH MARK: ☐ Cut In East end of Lt. Wheelguard of bridge over Rt. Service Rd. 8' Rt. Sta. 89+18, Elev. 298.26.

CONSTRUCTION SPECIFICATIONS: Arkansas State Highway and Transportation Department Standard Specifications for Highway Construction, 1991 edition, with applicable supplemental specifications and special provisions.

DESIGN SPECIFICATIONS: AASHTO Standard Specifications for Highway Bridges, 1989 with current interim specifications.

LIVE LOADING: HS20

MATERIALS AND STRENGTHS:
Class S(AE) Concrete (superstructure)
Class S Concrete (substructure)
Reinforcing Steel (A615 or A617, Gr. 60)
Structural Steel (A36)

STEEL PILING: Piling in end bents 1 & 6 shall be HP 10x42 and shall be driven to a minimum safe bearing capacity of 55 tons per pile. Piling in bents 2 - 5 shall be HP 12x53 and shall be driven to a minimum safe bearing capacity of 70 tons per pile. All piling shall be driven with an approved air, steam or diesel hammer. Piling in end bents shall be driven after embankment to bottom of cap is in place. Piling in bents 2 - 5 shall have a minimum penetration of 20' below the excavated channel surface. Lengths of piling shown are for estimating quantities and for use in determining payment for cut-off and build-up in accordance with the standard specifications. On all piles the Contractor shall use Hard-Bite HP 77600 H-Pile Points manufactured by Associated Pipe and Fitting Corporation, Versa-Bite 300 P Rock Duty Series H-Pile Points manufactured by Versa-Steel, Inc. or equal as approved by the Bridge Engineer.

BRIDGE DECK: The concrete deck shall be given a fine finish as specified for final finishing in subsection 802.20 for Class 5 Bridge Roadway Surface Finish.

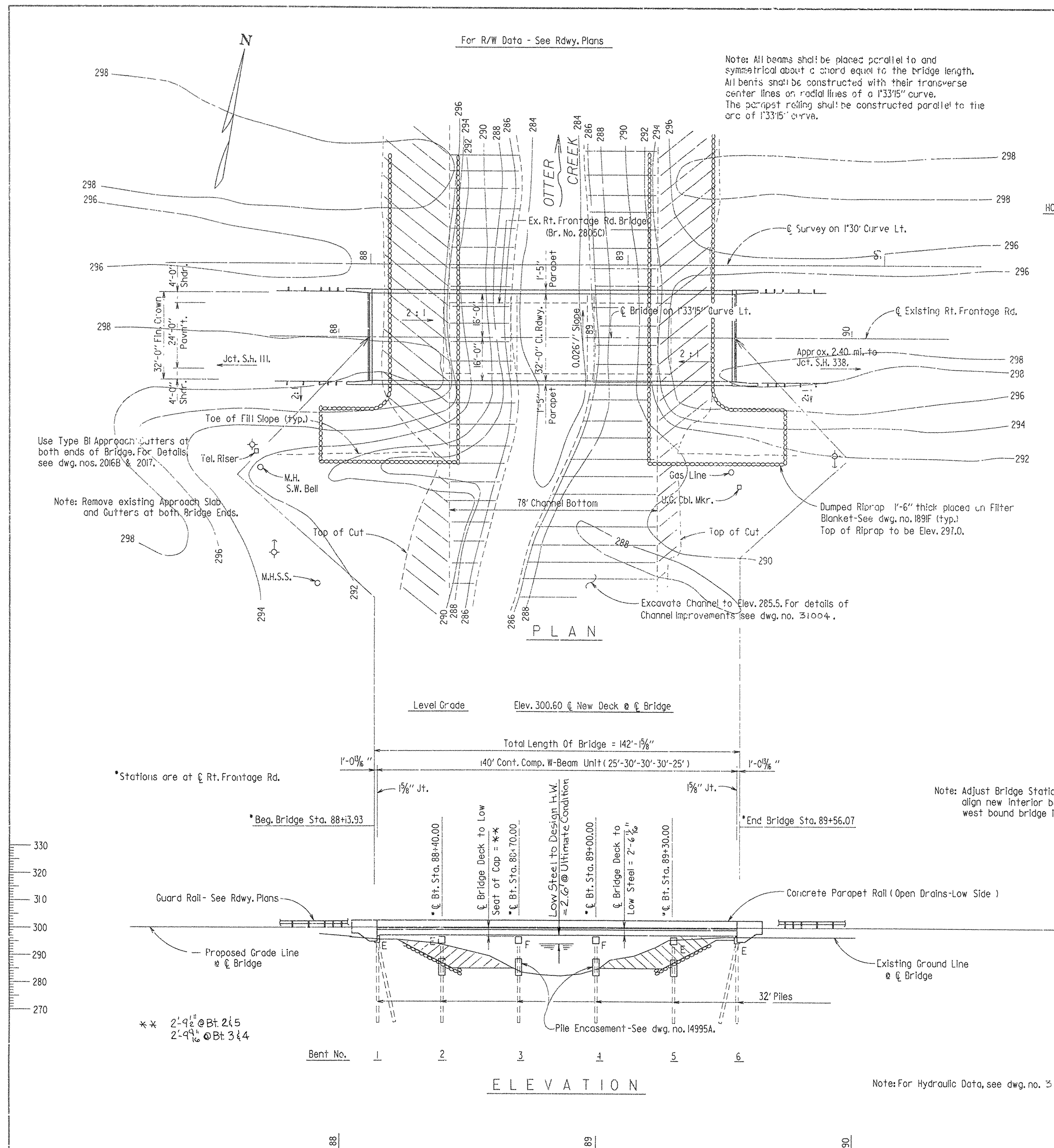
DETAIL DRAWINGS:

End Berits
Intermediate Berits
140' Cont. Comp. W-Beam Unit

TEMPORARY BRIDGE: Construct a 140' long temporary bridge approx. 40' upstream. The temporary bridge shall have a minimum roadway width of 24', minimum live load capacity of H15. See section 603 of the Standard Specifications. See drawing numbers 2391, 2391A and 2392A for standard temporary bridge details. If timber piling and pine timber are used on this temporary bridge structure the materials shall be treated with a preservative according to the standard specifications. See roadway plans for actual detour grade and alignment.

EXISTING BRIDGE: The existing bridge No. 2805C is 26' wide and 90' long and the super-structure consists of three R.C. Slab Spans. The substructure consists of concrete caps with steel piling.

REMOVAL AND SALVAGE: The Existing Bridge shall be removed in accordance with Section 205 of the Standard Specifications. All material from the existing bridge shall become the property of the Contractor except the metal bridge railing which shall remain the property of the state.



HORIZONTAL CURVE DATA: (FOR C. EX. RT. FRONTAGE RD.)

P.I. = Sta. 84+54.95
P.C. = Sta. 73+59.45
P.T. = Sta. 94+93.17
 $\Delta = 18^{\circ}30'21''$ Lt.
D = 1'33'15"
R = 3686.59'
L = 1190.72'
T = 600.59'

HORIZONTAL CURVE DATA: (FOR C SURVEY)

P.I. - Sta. 84+46.92
 $\Delta = 32^{\circ}00'21''$ Lt.
 $U = 1^{\circ}30'$
 $R = 3819.7186'$
 $L = 2133.72'$
 $T = 1095.50'$

Note: Adjust Bridge Stationing as needed to align new interior bents with the existing west bound bridge interior bents.

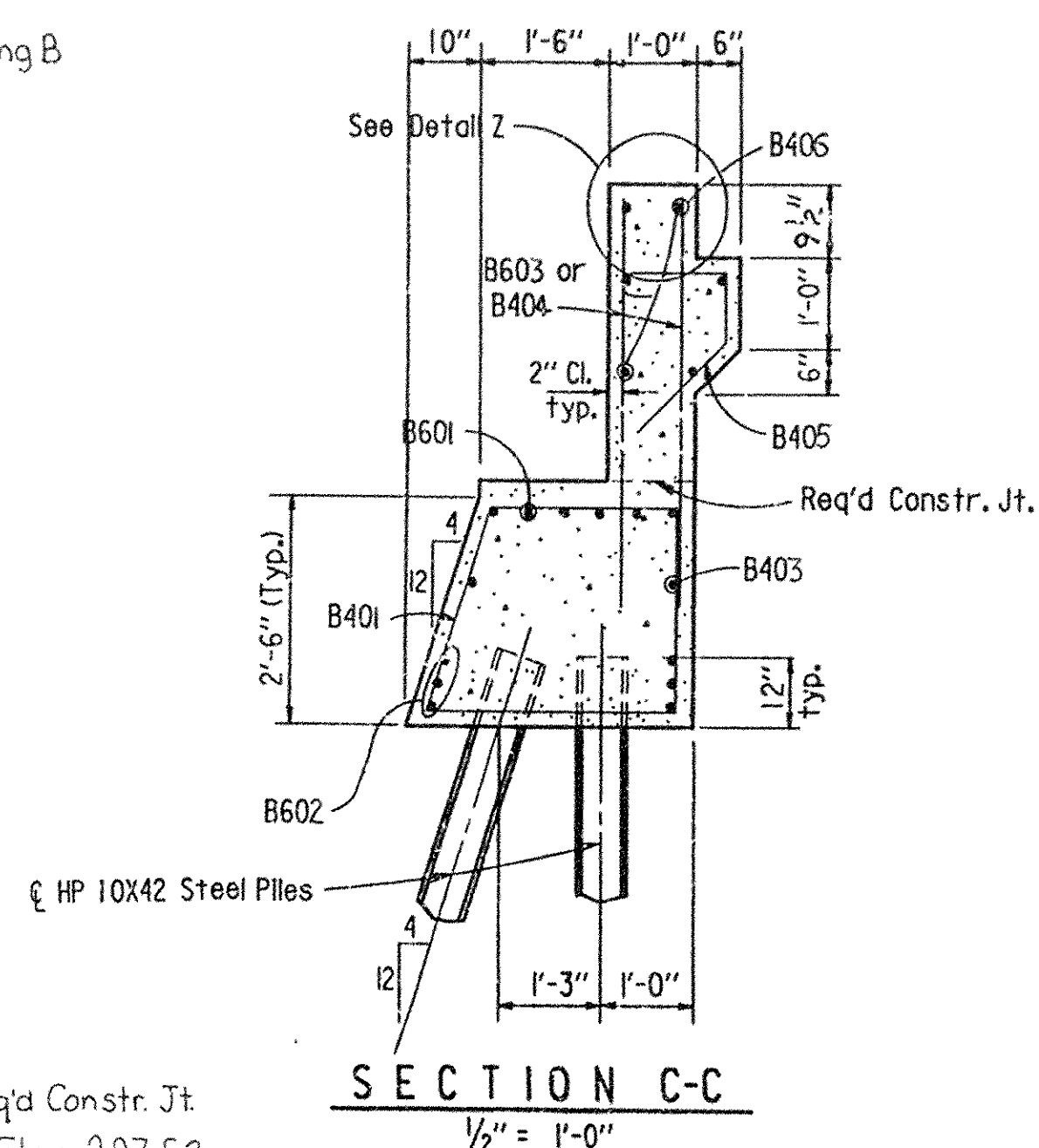
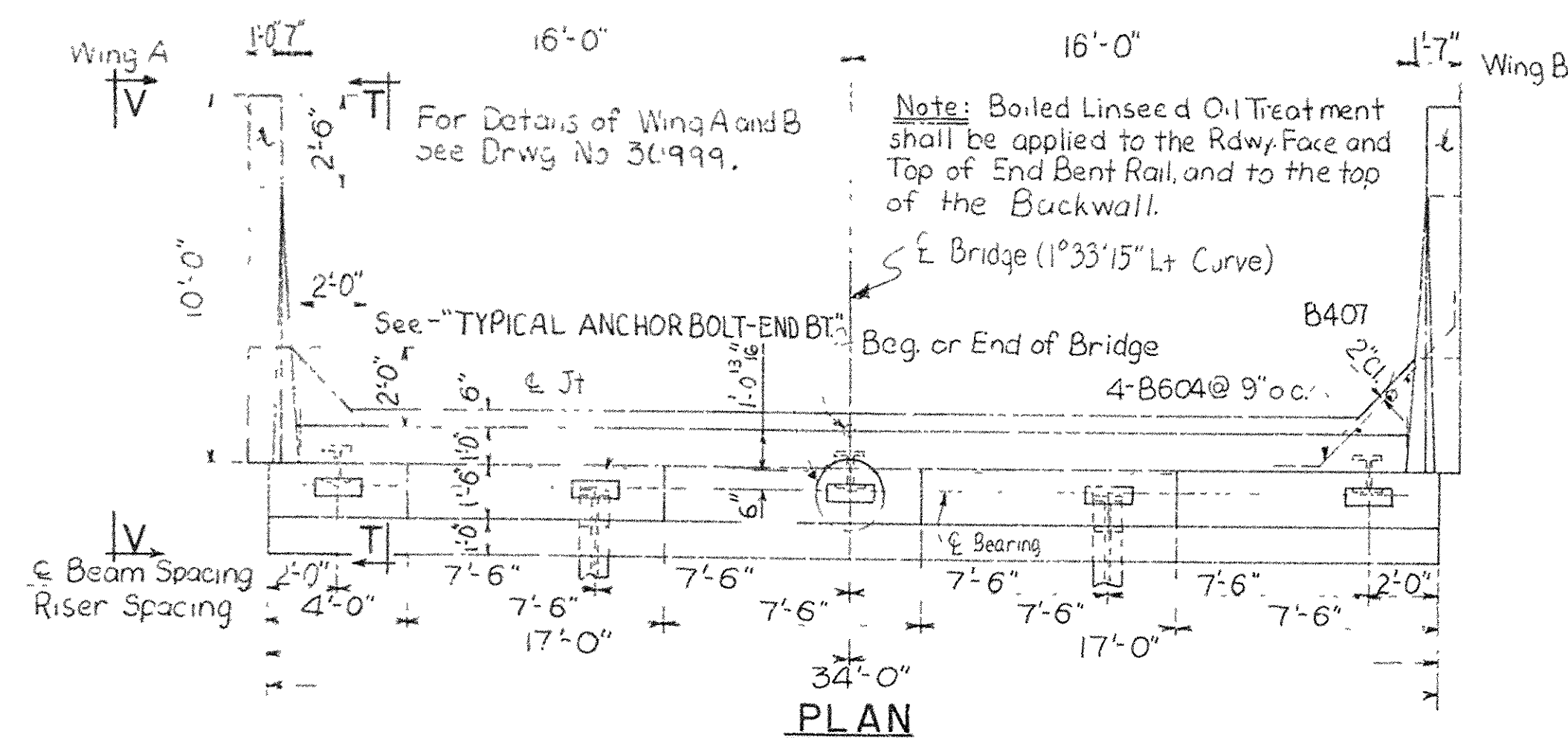
Note: For Hydraulic Data, see dwg. no. 31004.

LAYOUT OF BRIDGE OVER
OTTER CREEK
(RT. FRONTAGE ROAD)
CROOKED, HURRICANE, AND OTTER CREEK
STRS. & APPRS. (E.B. LANE)
SALINE & PULASKI COUNTIES
INT. ROUTE 30 SEC. 23
ARKANSAS STATE HIGHWAY COMMISSION
LITTLE ROCK, ARK.

DRAWN BY: WMAJ. DATE: 6-22-90
CHECKED BY: GEC DATE: 7-23-90 SCALE: 1" = 20'
DESIGNED BY: GEC DATE: 5-90
BRIDGE NO. 6357C DRAWING NO. 31018

I, 500, 3000, 1618, RWME548, B1618X2.L05

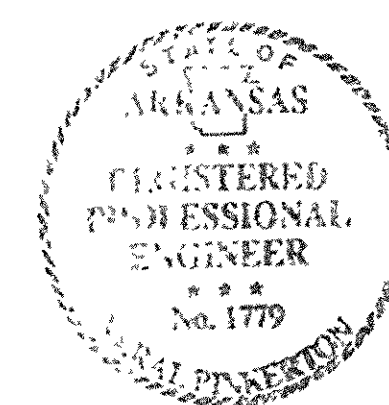
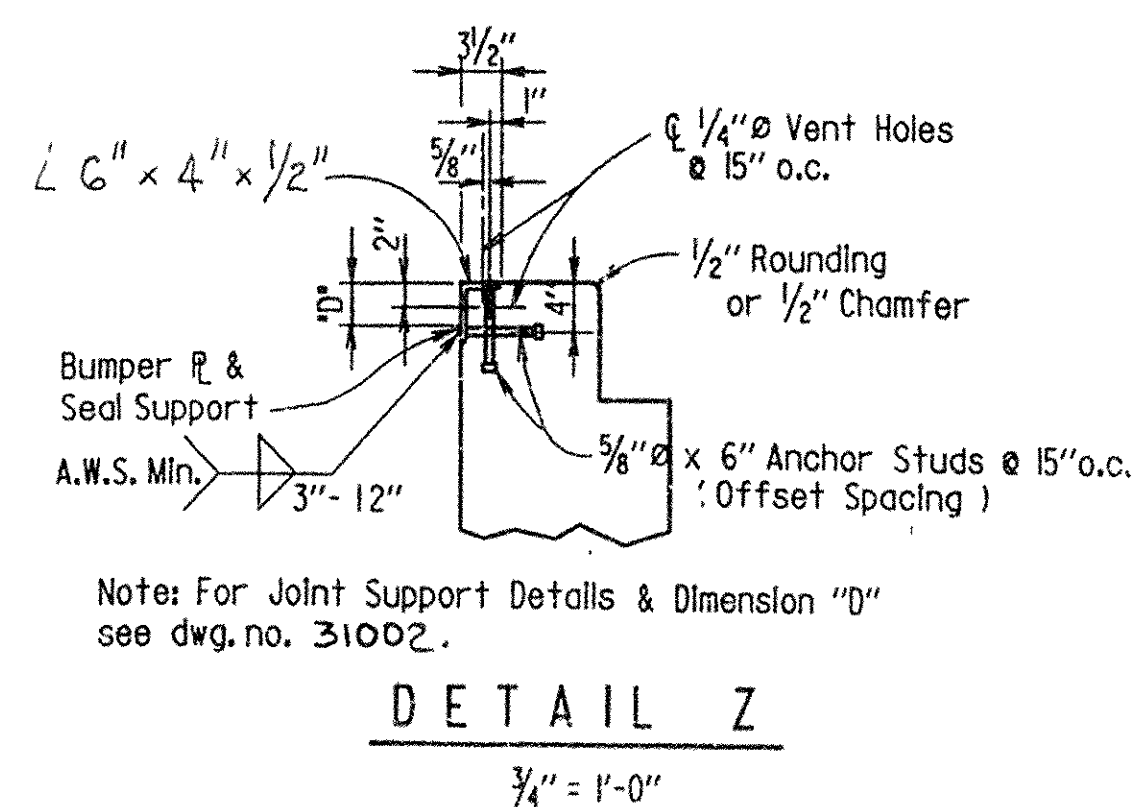
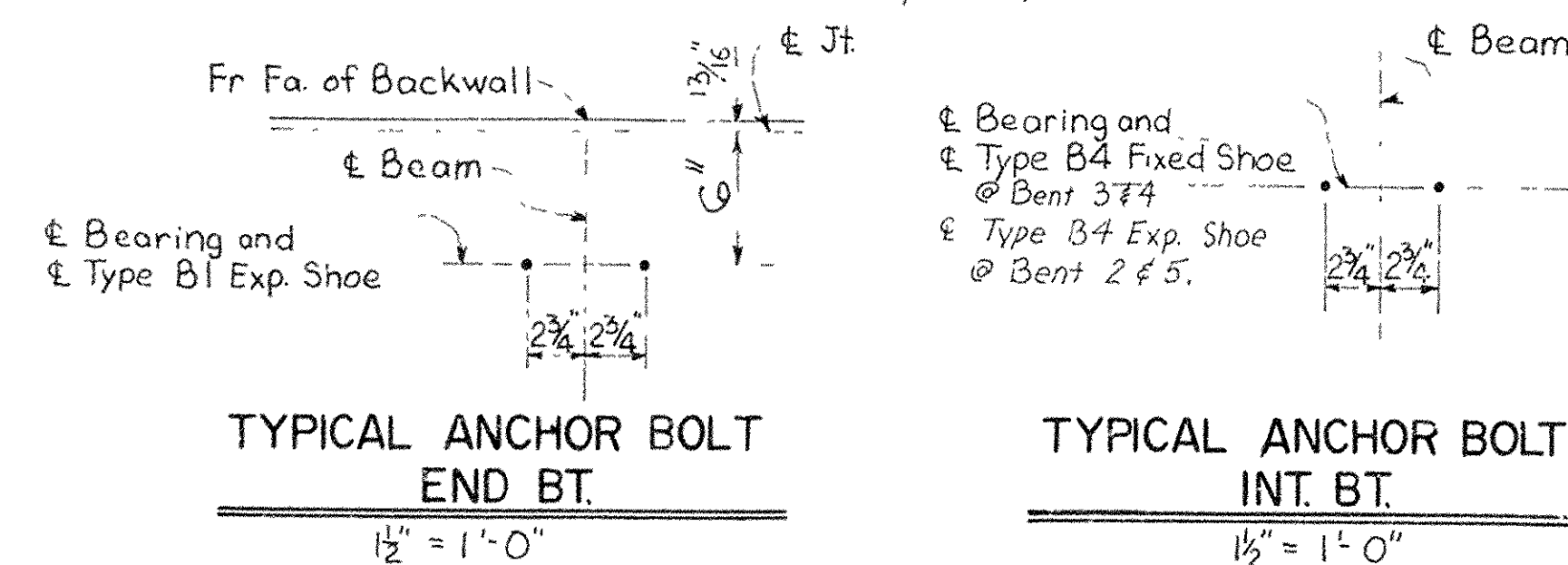
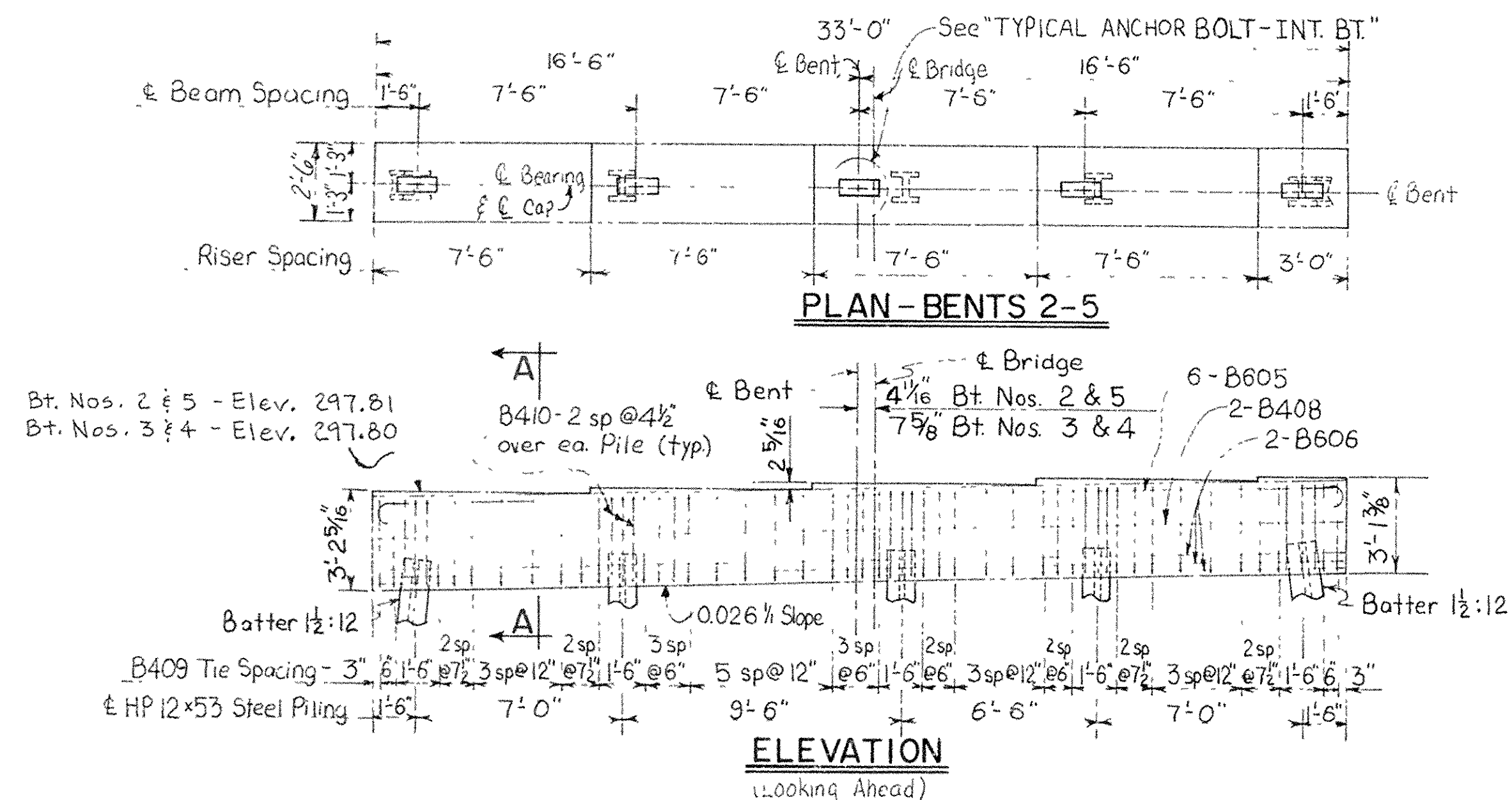
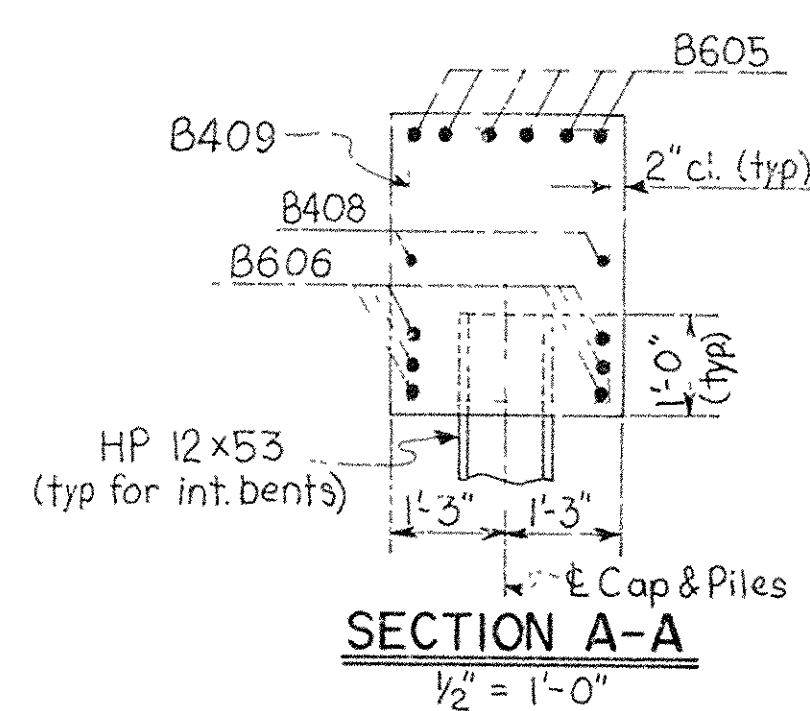
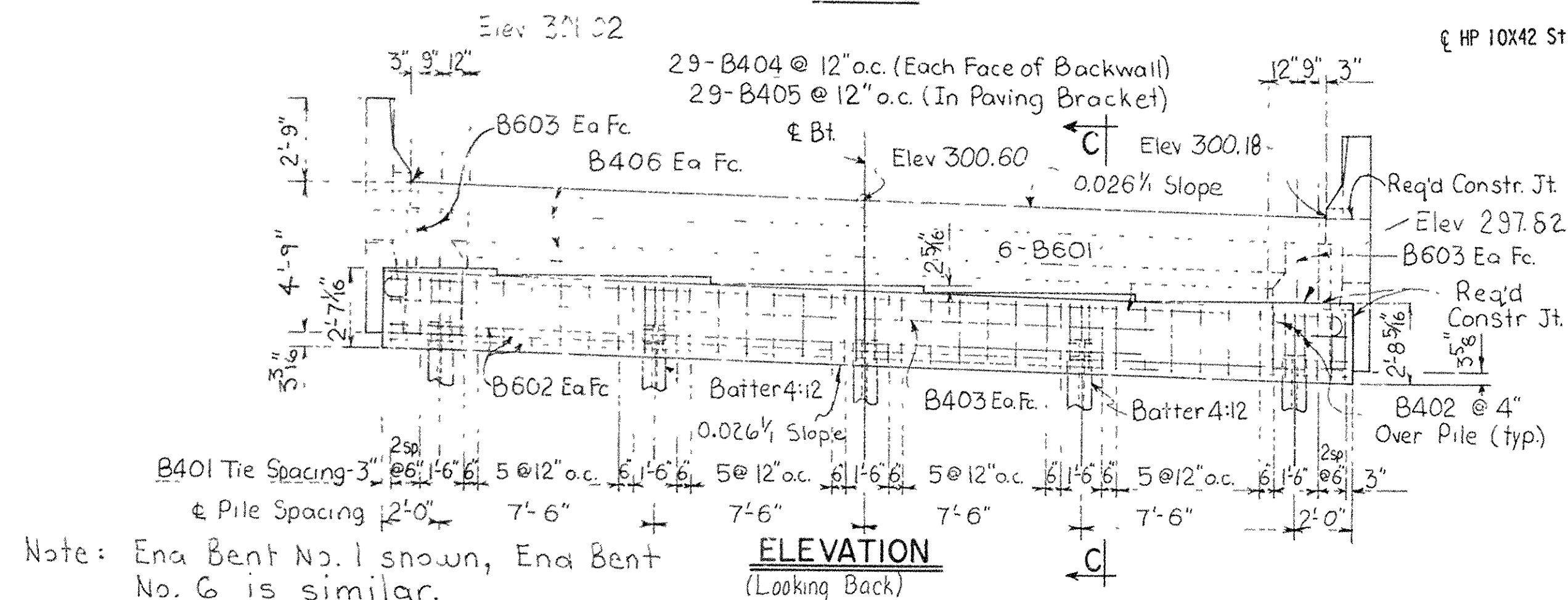
DATE REVISED	DATE FILMED	DATE REVISED	DATE FILMED	FED ROAD DIST NO	STATE	FED AID PROJ. NO.	SHEET NO	TOTAL SHEETS
				6	ARK.			
				JOB NO.		60452	63	118
				① G357C	BENT	31019		



BAR LIST - PER BENT

[illegible]

note: For Bar List of Wing and Rail, see
dwg. no. 30799.



DETAILS OF BENTS
OTTER CREEK
(RIGHT FRONTAGE ROAD)

INT. ROUTE 30 SEC. 23
ARKANSAS STATE HIGHWAY COMMISSION
LITTLE ROCK, ARK.

DRAWN BY BSA DATE 8-8-90
CHECKED BY William J. Bock DATE 5/8/28/90 SCALE: 1/4" = 1'-0" or as Shown
DESIGNED BY GEC DATE 8-2-90

BRIDGE NO. 6357C DRAWING NO. 31019

